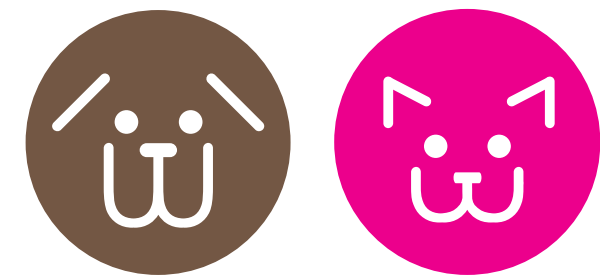


A black and white dog is running on a sandy beach. The dog has its tongue out and is holding a yellow and green ball in its mouth. It is wearing a red collar. The background is a grassy area with a fence.

THEIR STORY BEGINS WITH YOU



ANNUAL REPORT 2016 & 2017



... and without you
there would be

NO

wee



bideawee®

a Scottish phrase which means “stay awhile,” is one of the country’s oldest and most respected animal welfare and pet adoption organizations. Founded in 1903 by Mrs. Flora Kibbe, Bideawee has been providing shelter, care and compassion to homeless animals and helping them to find their forever homes for 115 years.

Bideawee operates from three locations serving the greater New York metropolitan area and Long Island communities with facilities in Manhattan, Wantagh, and Westhampton.

Bideawee is a not-for-profit 501 (c)3 humane organization and 100% of Bideawee’s funding comes from private sources.

For more information visit bideawee.org



BOARD OF DIRECTORS 2016 & 2017

410 East 38th Street, New York, NY 10016 • 866.262.8133

OFFICERS - 2016

Mary M. Luria, Esq., Chair

Joseph L. Sorbera, Jr., Vice Chair-Administration

Sally Wood, Vice Chair-Strategic Planning

Guy B. Lawrence, Treasurer

Pamela Laudenslager, Secretary

Dolores Swirin-Yao, President & CEO

OFFICERS - 2017

Joseph L. Sorbera, Jr., Chair

Leslie C. G. Campbell, Vice Chair-Administration

Patricia Haegele, Acting Treasurer

Pamela Laudenslager, Secretary

Leslie Granger, President & CEO

DIRECTORS - 2016

Pallavi R. Atluri, Esq.

David H. Best, MD, MBA

Leslie C. G. Campbell

Kevin Davis

David L. Fazio

Andrew S. Frey

Garth E. Griffiths

Pat Haegele

Keith Manning, DVM

William S. McKeever

Doug Ray

Thomas W. Young

DIRECTORS - 2017

Pallavi R. Atluri, Esq.

David H. Best, MD, MBA

Kevin Davis

Garth E. Griffiths

Mary M. Luria, Esq.

Keith Manning, DVM

Rachael Millar

Doug Ray

Todd B. Richter

Kimberly Yarnell

Thomas W. Young



The Better Business Bureau honored Bideawee by extending its Seal of Approval for two additional years in recognition of the organization's achievement in meeting BBB's 20 Standards for Charity Accountability.

Bideawee is in full compliance with the New York State Non-Profit Revitalization Act, the state's first major reform to its charities laws in more than 40 years.

LETTER FROM THE PRESIDENT

As many of you may know, September 2017 marked my first month back at Bideawee after a 14-month hiatus. I couldn't be any happier to rejoin the Bideawee community, or prouder to be leading an organization whose mission, pets, and people mean so much to me.

When Mrs. Kibbe first began Bideawee out of a small building near her home in Manhattan in 1903, New York City's stray and homeless animals were being destroyed in large numbers, simply due to a lack of space and care. Mrs. Kibbe may have been new to the animal welfare world at the time, but she knew one thing for certain: New York City's companion animals deserved better.

Bideawee continues to honor the now 115-year-old mission and vision of our founder in everything we do. These last two years have been a time of excitement, change and growth. With a focus on placing an even greater number of animals in loving homes, we have succeeded in steadily increasing our adoption numbers and achieving monthly milestones for both our Westhampton and New York City adoption centers. In the last two years our adoptions have increased, and in 2017, we exceeded our goal of 1,100 adoptions, placing a total of 1,318 dogs and cats in loving, forever homes. This includes 187 adoptions from 72 Mobile Adoption events over the course of 2016 and 2017, which were made possible due to the generous donation of our beautiful, state-of-the-art adoption vehicle. Our matchmaking process and the passion and commitment of our staff and volunteers has continued to ensure successful lifelong relationships and helped us maintain some of the lowest return rates in the industry.

In 2017, Bideawee launched the Todd B. Richter Foster Care Program and in its very first year, 96 animals were placed in loving foster homes, resulting in 7,290 hours of care for the dogs and cats who needed it most.

Our Animal Hospitals have continued to provide expert care and compassion to both private clients, and the hundreds of homeless dogs and cats – some in the most dire of circumstances—that come to Bideawee each year. In conjunction with Bideawee's PAWS (Prevention and Wellness Satellite) facility in Wantagh, Bideawee's veterinarians were able to spay and neuter hundreds of animals, provide life-saving care and specialized attention to the neediest cases, and minimize disease among Bideawee's adoptable animals.

Animal lovers who lost their beloved pets continued to find solace and a fitting permanent resting place for their beloved companions at our Pet Memorial Parks in Wantagh and Westhampton. Family members came together in our pet bereavement groups to seek out others who can understand the depth of feeling we have for our lost friends.

Bideawee's volunteer program continued to grow and offer diverse opportunities for animal lovers to offer their time and expertise to the organization. In 2016, Bideawee's volunteers contributed more than 54,000 hours, including efforts from new pet therapy pairs, teen groups, and corporate volunteers, and in 2017, that number surpassed 58,000 hours. Bideawee's volunteers are invaluable to the organization, consistently proving themselves to be some of our most loyal and vocal advocates, representing Bideawee at events in the community, spearheading donation efforts, and using digital media to elevate awareness for our work.

Looking ahead...

In 2017, we set out to achieve a goal of doubling our adoptions over the next five years, and we are well on our way to meeting, and soon exceeding that goal.

We continue to build relationships across the country, increasing the number of animals rescued from uncertain fates at high-kill shelters, and brought to safety at Bideawee. With the success of the Todd B. Richter Foster Program, which has helped us increase our adoptions by 10% and provide critical care to newborns, nursing mothers, and sick and injured animals, we look forward to rescuing even more lives in 2018.

Bideawee's medical team is on the front lines day in and day out ensuring that every sick, and injured animal that comes through Bideawee's doors is given the life-saving care they need. In 2018, we will rely on the compassion and expertise of Bideawee's Animal Hospitals to help us reach our adoption goals by providing spay/neuter, wellness care, surgeries and emergency services to all Bideawee's resident animals. In addition, the Westhampton Animal Hospital will continue to offer outstanding care to private clients.

Bideawee's Pet Memorial Parks will continue to provide compassionate care to those who are mourning the loss of a beloved pet. In 2018, the organization will explore new ways to increase visibility of our beautiful parks, and honor the enduring love between people and pets.

Bideawee's volunteers are an integral part of the organization, and I cannot emphasize how much I value their hard work and dedication. In 2017, I invited our volunteers to attend the organization's Town Hall Meetings, and instituted a quarterly informal gathering with me called "Coffee with Leslie," to encourage our volunteers to ask me questions, and discuss the issues that mean the most to them. I believe that our volunteers are our greatest ambassadors and I will continue to make every effort to include their thoughts and ideas in our plans as we move toward a bright future.

Some of Bideawee's most successful initiatives as of late have been the result of the extraordinary efforts of Bideawee's Young Professionals Committee. The YPC has brought new enthusiasm, support, and wide range of skills and expertise to the organization, and we are so excited to see what they have in store for the year ahead.

As a nonprofit charitable organization, Bideawee relies on donations from the public. Over the last two years, the organization's generous donors have contributed to a banner year of achievements, including the most successful gala in Bideawee's history; an outpouring of support and generosity around Hurricane Harvey and Irma efforts; the expansion of the Kibbe Society, our recognition society for those who have named Bideawee in their estate plans; and an exceedingly generous donation toward the viability and successful future of our Westhampton location. None of this would have been possible without the remarkable generosity and support of our dedicated donors.

Many of you are probably familiar with some of the recent uncertainty surrounding our Westhampton location. While it remains true that the Westhampton site has historically been underutilized, we are doing everything in our power to change that. It is both my personal priority, and the priority of the organization to see to that we explore every possible opportunity to keep the Westhampton location open and thriving. Over the next year we will be increasing adoption events, fundraisers, media opportunities, and overall marketing efforts for the Westhampton location. As a life-long Long Islander, I have always had a special place in my heart for our Westhampton site. It is a beautiful, sprawling location filled with a spirited staff; passionate, devoted volunteers; loving animals awaiting their forever home; and a dedicated, extended community committed to its mission and success. Thank you, for being a part of that community, and the Bideawee community at large. I am filled with hope and excitement about 2018 and beyond, and I invite you to join me in making the world a brighter, more compassionate place for pets and the people who love them.



Leslie Granger
President and CEO

MISSION & VISION

**BIDEAWEE'S MISSION IS TO BE
GREATER NEW YORK'S LEADER
IN RESCUING, CARING FOR,
AND PLACING HOMELESS CATS
AND DOGS WITH PEOPLE WHO
LOVE THEM.**

Bideawee will fulfill our mission by providing the highest quality shelter experience, medical care, socialization activity, and adoption services within a disciplined and sustainable financial structure. We are a compassionate team of dedicated staff, board members, and volunteers, and our work demonstrates our ongoing commitment to the well-being of animals and people in our community.



PETS RESCUED FROM MUNICIPAL SHELTERS

2016	2017
539	931



TOTAL ADOPTIONS

2016	2017
990	1,313



VOLUNTEERS

2016	2017
700	1,067



VOLUNTEER HOURS

2016	2017
54,604	58,517



ADOPTION RETENTION RATE

2016	2017
94%	94%



ANIMAL HOSPITAL VISITS

2016	2017
9,336	8,771



PET THERAPY PAIRS

2016	2017
110	120



READING TO DOGS LOCATIONS

2016	2017
54	75



PET MEMORIAL PARKS BURIALS & CREMATIONS

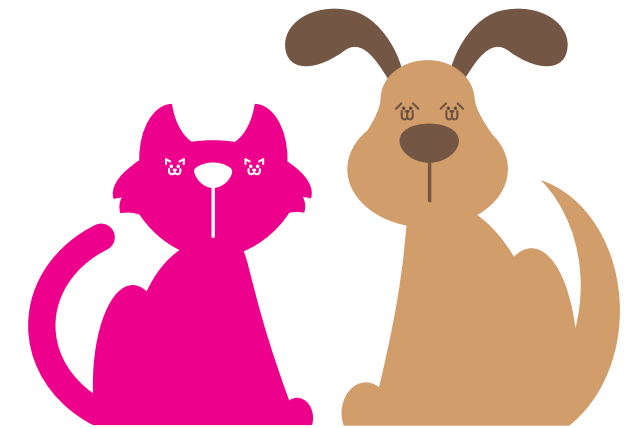
2016	2017
1,143	1,098



growing together...



ADOPTION CENTERS



Every dog and cat that passes through Bideawee's doors has a unique story—some are starting out in the world, others are in desperate need of a second chance—but all are embarking on a journey that will lead them to the 'happily ever after' they deserve.

Like every good fairytale, the beginning is just as important as the end, and every Bideawee animal begins its journey at Bideawee's Adoption Centers. For more than 115 years, Bideawee's Adoption Centers have provided a safe haven for homeless animals with nowhere else to go. The staff and volunteers at the Adoption Centers provide the food, shelter, love, care, training, and socialization that is necessary to transform injured and neglected animals into healthy, happy, cherished family members.

In 2016 and 2017, Bideawee found homes for 2,303 animals. Every adoption occupies a special place in our hearts, but some are more challenging, requiring patience and faith that an animal's home will come, and making the occasion that much more special when it finally does.

JENNY

(NOW ELLIE)

One such adoption was a dog named Jenny, who came to us in May of 2016. She was rescued from a high-kill shelter in Alabama after she had been abandoned in the woods. Shortly after her arrival, we noticed she had difficulty standing and would cry out in pain. Upon further examination, we found that Jenny had congenital disorders that were hindering her ability to move and act as a normal puppy would. Her little face was disproportionate. She had a wobbly gait. She ate normally and was as endearing as could be, but every now and then she would freeze up and cry out in pain. We did more tests. It was discovered that Jenny had a nerve disorder called Horner's Syndrome. This condition affected not only her face, but her entire body.

The longer she stayed with us, the more we all became attached to her, hoping that one day an adopter would see her for all those endearing qualities that we saw and not what deterred her from being a normal, active puppy. One day in August 2016, that happened. A wonderful family came in to meet her, immediately fell in love, and decided that she would be the perfect addition to their family. Today, Jenny (now Ellie) lives like an absolute queen, spending her days running through Central Park or lying on the terrace at her apartment. She is showered with affection and attention, and we could not have asked for a better home for her.





VETERINARY CARE



In addition to providing quality care to private clients, Bideawee's veterinary medical team cares for more than 1,000 animals that come through Bideawee's Adoption Center each year. Many of these animals come to Bideawee in dire need of care, and make full recoveries thanks to the dedicated, passionate staff at The Animal Hospitals at Bideawee.

One-year-old kitty Tocho was one of these animals. Tocho was brought to Bideawee in October of 2016, after he was found injured and motionless in the cold. He was unable to move his back legs and was too weak to raise his head. His left eye was so severely injured it was bulging from the socket.

TOCHO



Bideawee's Animal Hospital staff immediately stabilized Tocho and began developing a treatment plan. With expert, customized care, Tocho became stronger, but still could not urinate on his own or use his back legs. To address these issues, the staff created a kitty "zip line" in the treatment area and placed him in a harness, using the zip line to hold him up. As the days went by, the hospital staff began to see more movement of his tail and back legs. Then one day he began to urinate on his own-- slowly at first, but eventually he was able to fully empty his bladder. The staff used a laser pointer to encourage him to move even when it wasn't easy. Little by little, he grew stronger and stronger.

When the time was right, Bideawee's veterinarians contacted a physical therapist that made Tocho his very own mobility cart. At that point, he had become so active that we often had trouble getting him in the cart! Soon, the vets were able to remove his bad eye and neuter him. By January he was walking on his own, urinating, and playing like any other healthy cat. And the best news of all? After spending so much time nursing him back to health, one of Bideawee's veterinarians decided to make him the newest member of her family. These days, he spends his days running, jumping and playing with his two brothers, Paulito (another black cat), and Pedro (a Chihuahua).





PET MEMORIAL PARKS



From the beginning, Bideawee has always understood the important role that pets play in every pet lover's life, and created the Pet Memorial Parks in 1916 to give cherished pets a fitting final resting place. More than 65,000 animals have found a peaceful resting place at The Pet Memorial Parks in Wantagh and Westhampton because pet parents trust Bideawee to provide personalized, loving tributes to their lifelong companions.

Many patrons of The Pet Memorial Parks at Bideawee have been using and visiting the parks for decades. Lorelei K.S. and her family have been coming to the cemetery since the 1950's and have more than 40 plots dedicated to their beloved four-legged family members. Today, Lorelei can be found holding vigil by her family's many gravesites. She visits the Pet Memorial Park in Wantagh each and every day, weathering all temperatures and conditions, to pay tribute to the many companions she has loved, and left in the care of the Pet Memorial Parks.

Another client, Frank, is generous with his time and energy and has been known to bring boxes of chocolate for the staff when visiting. He often expresses how thankful he is to have had a place like Bideawee to put his dog to rest.

In 2016, Bideawee's Pet Memorial Parks continued to offer additional ways to pay tribute to pets, including holiday lights that symbolize the brilliance and joy that our pets have brought to our lives. Throughout the winter months, many people come to visit the Memorial Parks at dusk to appreciate the lights and honor the beautiful companions that may be gone, but will never be forgotten.

For many, there's nothing more devastating than the loss of a beloved pet. We've learned from experience – both personal and professional – that the act of placing a memorial is often the first real step in healing from the loss. In the summer of 2017, Bideawee's Pet Memorial Parks launched the online Pet Memorial Tribute Gallery to celebrate the special bond between people and their lifelong companions. The tribute gallery provides a focal point for grief, and allows family members and friends to have a place to actively mourn the passing of their animal companion while creating a lasting remembrance.





EVENTS



In 2016 and 2017, Bideawee participated in a total of 257 events. By developing a variety of events across Long Island and New York City, we were able to showcase our adoptable animals, as well as the services and expertise we provide pets and pet people in the community. This year, our events took many different forms, from large scale adoption events with our Mobile Adoption Unit, to Cuddle Events offering cuddle time to employees of large corporations, to partner events allowing us to align with popular brands and businesses, to grassroots fundraisers which generated more than \$24,000 for our animals. These events give us the opportunity to elevate awareness of about our adoptable pets, and find even more homes for dogs and cats in need. This year some of our partners included MTV, Horizon Media, PetSmart, Shake Shack, Corcoran Realty, London Jewelers, Subaru, Hotel 48 Lex and Refinery 29.

In March of 2016, Bideawee's new 27-foot mobile adoption van hit the road to deliver adoptable dogs and cats of all ages and sizes to communities across New York City and Long Island. Bideawee hosted 50 mobile adoption events over the course of 10 months, resulting in 95 adoptions. April 2017 saw our official public mobile van launch, with a free adoption event in Union Square hosted by H2 Capital Partners.

TEAM BIDEAWEE

For the first time, Bideawee joined the Hamptons Marathon as a charity partner. Twelve dedicated runners joined Team Bideawee to run the Hamptons Half Marathon on October 1st. Team Bideawee raised more than \$8,000 and ran 13.1 miles for Bideawee's homeless pets! Runners included staff, volunteers and adopters.

Bideawee volunteer and adopter, Beth Gustin, raised more than \$1,000.



"I began volunteering at Bideawee a little over two years ago. It's been really rewarding spending time with all of the great dogs who come to Bideawee and to see them go to their happy homes. When Penelope showed up there, I knew she was the one for me. We love spending time outdoors walking, hiking, and of course playing in the yard! Joining Team Bideawee for the Hamptons Half Marathon combines two of my favorite things - running and helping out this great organization. And I need to stay in shape to keep up with my girl!"

- Beth





VOLUNTEER

In 2016 and 2017, Bideawee's 700 volunteers contributed more than 113,000 hours in a variety of ways. They actively donated their time to maintain the care and happiness of our adoptable dogs and cats, attended events to inform the public of our services and promote adoptions, performed behind-the-scenes duties in our administrative offices, and brought their pet therapy animals into local nursing homes, hospitals, schools and more. The time donated in 2016 was 10% higher than time donated in the prior year, as we have expanded our volunteer opportunities across all of Bideawee's departments to further support our mission. We were also excited that we grew our pet therapy programming by 20% over the previous year by building new partnerships in our community to help more people in need, with two of our most notable connections being all AHRC Nassau facilities and the Nassau BOCES School Library System.

Bideawee's volunteers routinely go above and beyond to help the organization's animals and raise funds and awareness for our life-saving efforts. In August of 2016, Westhampton Teen Volunteer, Casey Galishoff, came to us with an idea. She was about to celebrate her Bat Mitzvah and decided to use the occasion to raise funds for Bideawee, and because of her experience at the shelter, she knew exactly how she wanted to help. She used her monetary gifts to fund a transport and enable Bideawee to rescue 40 dogs from a high kill shelter. She then traveled to Bideawee's Wantagh isolation facility with her family to meet and provide hands-on care for the dogs she rescued, and her grandparents even adopted one of the dogs in her transport! We were so in awe of Casey's kindness and generosity that we highlighted her as a Junior Honoree at our 2017 Bideawee Gala.



OUR VOLUNTEERS



Similarly, Bideawee volunteer Jeannie works for Riverhead Building Supply, a local construction company. Occasionally, items are sent back or mismeasured, and Jeannie took one such opportunity to gift a brand new piece to Bideawee's Westhampton location. She donated a beautiful wood cabinet to the Adoption Center to improve the look and functionality of the cat rooms. Another volunteer, Pete, stepped in to restructure the cabinets and, from there, another volunteer, Renee, recruited her Art Club students from the Center Moriches Middle School to submit designs and create a painting for the outside of the cabinets. Each of the students worked together to paint the cabinets and do something to benefit the shelter. Many Art Club members learned more about Bideawee, and even became volunteers after the project, which was an added bonus! The students did an outstanding job, and really enjoyed working together to make Bideawee's cats more comfortable. The cabinets now hold fresh linens, toys, litter, and bowls. Everything the cats need is readily accessible, making life easier for the kitties and those who care for them!



YOUNG PROFESSIONALS COMMITTEE

The Bideawee Young Professionals Committee, founded in 2014, has had an exceptional year of growth and change. In just the last fiscal year alone, the YPC has raised approximately \$26,000 through events and individual member contributions. Membership has grown 143% (30 active members to more than 70) since January 2017 with inquiries about joining the committee coming in weekly. The YPC's signature events, like comedy nights at the Stand Comedy Club, holiday-themed Nights at the Shelter (hosted at the Manhattan campus), and Bike for Bideawee spin classes, continue to sell out.

In recognition of their leadership as co-chairs of the YPC, Devin Shanahan and Joe Sorbera, III, were honored during the cocktail reception at the Bideawee Ball in May 2017. In the summer, the YPC underwent a change in their Executive Board. Jillian Roberts, a founding member and YPC Events Chair, was selected to succeed Devin as co-chair. Jillian has brought a tremendous amount of experience and energy to the committee and will continue to be a driving force behind the YPC's success. Nicole Passmore, in her role as Outreach Chair, has garnered and onboarded more new members than at any time in the YPC's history. As Co-Event Chairs, Jaime Israni and Katie Jo Righi have done a masterful job of planning several fundraising events, including securing sponsorships and auction items. Stephanie Lee, a new member, took on the Social Media Chair position and has significantly increased the number of followers to the YPC Instagram account. And Melani Wexler has continued her diligent and impressive work as Finance Chair. Supporting them are dozens of animal-loving young professionals that make up the Young Professionals Committee. The YPC looks forward to continued success and growth in the years to come.



HELPING ANIMALS IN NEED DURING HURRICANES HARVEY and IRMA

This past August, when Hurricane Harvey struck Texas, leaving thousands of people and animals displaced and desperate for help, Bideawee sprang into action to assist with animal rescue efforts. Just as the organization began getting plans in Houston underway, we received word about the imminent danger of Hurricane Irma, which was headed toward Miami. Immediately, we partnered up with groups that were assisting with the transport of animals out of Miami, and told you—our community—of our efforts. You responded with overwhelming generosity, and with your help, we raised more than \$20,000 for the animals affected by these devastating disasters.

In the beginning of September, Bideawee rescued a total of 52 dogs and cats from Houston and Miami. Our rescue teams met these terrified animals at airports, lifting them off the planes that transported them, and into the loving arms of Bideawee's staff and volunteers. In the days and weeks that followed, we watched these dogs and cats transform from shy, traumatized animals to affectionate, happy, future family members. It has been an unparalleled joy to watch them find their forever homes, and none of this would have been possible without your support. Thank you for being a reminder that the worst of times can bring out the best in all of us.



Bideawee would like thank our Major Donors for their loyalty and generosity. Bideawee depends solely on public support which enables us to carry out our mission.

MAJOR DONORS FY 2016

\$1,000,000+

Estate of Paul Lelong

\$500,000-999,999

Estate of Myra McKolic

\$100,000-499,999

Jules H. Drucker Living Trust
Estate of Zelma Flohr
Estate of James A. Golczewski
Estate of Rochelle F. Green
Alfonse S. Kaufman Jr.
& Jane E. Kaufman Living Trust
Estate of Ruth Kennedy
Lillian Leighton Trust
Estate of John Dallas Myers
Estate of James F. Oneill
Pollio Family Foundation, Inc.
Diana Schiller Trust

\$50,000-99,999

Estate of Raymond Benoit
Estate of Lorraine Drury
Blanche T. Enders Trust
Estate of Rita Hertzog
Roberta Nusim
Estate of Adele Rauch
Donna and Marvin Schwartz Foundation

\$25,000-49,999

Estate of Lorraine Avins
Leona Bothmer Foundation
Estate of Donna Brooks
Helen S. Brown Trust
Estate of Cynthia L. Eckhardt
Anna Flynn
The Bruce G. Geary Foundation
Patricia Haegele
Estate of Anna Hirsch
Rita Korn
Diana Langer-Marcus

Mary M. Luria, Esq.
Estate of Agnes Mazzeo
Eric and Stacey Mindich
Paul & Anna Oschwald Trust
Todd B. Richter
Estate of Kinse Clayton Rowland
Estate of Raymond J. Smith
Credit Suisse
Estate of Marlene Toobin

\$10,000-24,999

Pallavi and Anil Atluri
Estate of Lynne Bennett
Estate of Mildred Berger (Mildred Leiffer)
Leslie and Stuart Campbell
Estate of Nellie Crescio
Marisa Gondrez
Estate of Bessie Kavakos
William and Katherine Kouba Trust
Guy Lawrence and Kenneth Kraus
Estate of Mary C. Manning
Laura J. Niles Foundation
Estate of Estelle Oelzner
Estate of Clorinda Romano
Ann and Paul Rosche
Joseph L. Sorbera, Jr.
Jane and Frances Stein Foundation
Striano Electric
Estate of Angelina Tarabocchia
Estate of Miriam Temkin
Katrin Theodoli
Truist
Estate of Elizabeth L. Van Duzer
Mark Villamar and Esther Milsted
Estate of Samuel Wunsch
Thomas W. Young

\$5,000-9,999

Estate of Rita Albert
Bernice Barbour Foundation
Emma Barnsley Foundation
Georgina Bloomberg

Scott Brakebill
Jeffrey Braverman
Estate of Dolores J. Camerlingo
Janet G. Carlson
Rudolph Dinkel Trust
The Max and Victoria Dreyfus Foundation, Inc.
Wells Fargo Foundation
Joy Fishman
Andrew S. and Jill Frey
Estate of Rita Sussman Gamba
Greater Milwaukee Foundation
Arthur T. Anderson Family Fund
Garth Griffiths and Julie Garfunkel
John and Sarah Henry
Carol Hermann, M.D.
Dr. Harvey and Nora Krieger Endowment Fund
Estate of Susan Marinoff
NYCGives, Employees of New York City
Estate of Judith Phelan
Estate of Theresa E. Polancic
Estate of John J. Precanico
Joann and Phil Pucciarelli
Louis Pupello
Doug Ray and John Olsen
The Redducs Chartered Foundation Corp.
Eugene and Susan Schwartzwald
Devin and Mike Shanahan
Susan E. Sidd and Marc G. Odrich
Robert Stanton and Susan Melden
Patricia Stewart and Frank MacNamara
Credit Suisse Employee Giving Program
Estate of Barbara J. Thiemann
Walmart Foundation
Carol S. and Larry Weissenberg
Hillary and Bill Weldon
Therese K. White Charitable Trust
Barrie and Deedee Wigmore

\$2,500-4,999

Annie Angellino
Erwin L. Atkins
Barry's Bootcamp
Alex Berenson
Broadway Barks
Jane Brody
Helen M. Cammisa-Parks
Kelly Colbert and Andrew Nibley
Citrin Cooperman and Company, LLP
Abraham and Rebecca Crystal Foundation
Pegeen Fitzgerald Foundation
Galishoff Family
Alexandra Gold
Tim and Michaela Grob
Linda Guinane
Josephine Lawrence Hopkins Foundation
Horizon Media, Inc.
Kaplan Higher Education

Kinnoull Foundation
Estate of Dennis Klein
Keith and Enid Manning, DVM
Mayor's Alliance for New York City Animals
Elizabeth St. B. and Timothy McCarthy
Stacy McCosky
Lee Menszak
Ted and Alyssa Moudis
Wendy Nanus
Edmar Petterson
Helen D. Roosevelt
Sarah Saltzberg
Shake Shack Enterprises, LLC
Michael T. Strianese
Estate of Helen Tyrrell
Unite Eurotherapy, Inc.
Viking Global Foundation
Nancy Wender and Steven Rand
Renee Wilson
Sally Wood
Lois Zarka

\$1,000-2,499

239 Entertainment LLC
Tasia Ahmed
Ceil Ainsworth
Mary Amendola
Andrew Anderson
Lewis Apito
Dean and Anna Backer
Ron Balasco
Hugo Barreca
Julie Batliner
Claude and Natalie Baumann
Neuberger Berman
Paul Bernstein
David Best, M.D.
Wendy and David Blank
Sanford R. Block
Stephanie Bogucki
Cornelia Brodwin
James Buchness
Estate of Madeline E. Buglione
C. A. L. Foundation
Carl Caporal
Lenore Carasia
Eduardo Carbajosa
Gloria Castillo
Ralph Castina
Janice Challenger
Won Chan
Jae Choi
Michelle Choo
Shirley Chu
Harvey Cohen
Kathleen M. Conlon
Galen Morgan Cooper

Coupa Software
Crain Communications
Elizabeth A. Cronk
Cross County Savings Bank
Estate of Mary Rendall Dalbey
Nancy Dillillo
Panna Doshi
Robert F. Draper, Jr.
Barbara Lee Ebs
David Fazio
Rancho Feedwell Foundation
Estate of Ruth Evelyn Fehrenberg
Stephen H. Flamberg
Ford Foundation
Grace Forster
Lois Friedman
From Our Family to Yours Foundation
Arthur J. Gallagher & Co.
John A. Garraty
Henry Gerstenblitt
Joseph Giglio
Marilyn Gilhuly
Ginestra Family Trust
Don Goldberg
Goldman, Sachs & Co. Matching Gifts
Hope Goldstein
Thomas Griesa
Herbert E. Groskin Foundation
Matthew and Lori Hackethal
Melinda Hackett
Houlihan Lokey
Greta S. Hanisch
Stanley H Harrison
Estate of Ada M. Harrison
Edith Hartleb
Mabel Hasbrouck Perpetual Living Trust
Gardiner Hempel
Mandana Hormozi
Estate of Patricia Howes
Mr. and Mrs. Hans G. Jepson
Karen Jewett
Estate of Lorraine Kantor
Jeffrey Katz
Ann Kiesel
Jeanie Kilgour
David Krone
Robert Lapidus
Pamela S. Laudenslager
Kathleen Law
Andrea and Julian Leone
Susan and David Levine
Steven Levitsky
Loews
Lauren MacCallum
Marquis George MacDonald Foundation, Inc.
Michele Mahadeo
Plato Malozemoff Foundation

Dorothy Marks
Mary-Anne Martin
Harold and Barbara Martin Foundation
Corrine Martindale
Carol McCullagh
Amy McIntosh
William S. McKeever
The Elena Melius Foundation
Janis and Alan Menken
Rachael Millar
Estate of Elaine D. Miller
Mixed Breeds in Need
David Mond
Melinda Mora
Christopher Muscatella
Network for Good
David W. Ogrin
Leslie O'Loughlin
OneStop Singles LLC.
Pawcasso Art Studio and Pet Boutique, Inc.
8 Paws LLC
Alana Perkins
Elizabeth Pierce
Plan A Advisors
Bluestem Prairie Foundation
Anoop Punjabi and Gail Cook
Barry Putterman
Jeanne Pyne
Lauren Pytel
Henry Ramallo
Robin Reardon Nelson
Allexis Reis
Steven Robbins
Shana Rocheleau
John Rodger
Sandra Lee Rogers
Rohauer Collection Foundation, Inc.
Stewart Rosen
Morleen Rouse
Mary Ruffo
Alice Ryan
Edward J. Santos
Susan Schnelwar
David M. Schoenberg
Robert G. Schurman
Estate of Kate Seton
Mr. and Mrs. Joseph Shanahan
Stephen and Melissa Shapiro
Suzanne Siracuse
Mr. and Mrs. Peter Small
Bill Smith
Joseph Smith
Karen Smith
Sarah Solomon
Shirley Starr
Ralph M. Stone
Dolores Swirin-Yao

Mark Tessler
Doug Travaglione
Linda Twomey
Uber Technologies, Inc.
Candy Udell
Suzanne von Liebig
Voya
Sandra Wadsworth
Roger Walter
Michael Weinstat
Ron Welsh
Walt Whitman PTA
Robert H. Wilder Jr
Terry Williamson
James T. Woods
Mildred Young
Tommy Yuen

MAJOR DONORS FY 2017

\$1,000,000+

Estate of Paul Lelong

\$500,000-999,999

Donna and Marvin Schwartz Foundation

\$100,000-499,999

Lillian Leighton Trust
Estate of Diane Brettschneider
Estate of Robert Gilbert
Estate of Richard Grillo
Estate of Myra McKolic
Estate of Lynne Palmer
Estate of Karol Reiner
Estate of Severeyn Lavinia

\$50,000-99,999

Blanche T. Enders Trust
Estate of Iris Brown
Ruth Dunn
Estate of Bella Hechler
Alfonse S. Kaufman Jr.
& Jane E. Kaufman Living Trust
Hillary and Bill Weldon

\$25,000-49,999

Leona Bothmer Foundation
F&S Contracting Group
Freed Foundation, Inc.
The Bruce G. Geary Foundation
Diana Langer-Marcus
Estate of Laura Louise Northup

Estate of Loretta Maffei
Paul & Anna Oschwald Trust
Todd B. Richter
Estate of Royal A. Schade, Jr.
Estate of Ann Skovek
Joseph L. Sorbera, Jr.

\$10,000-24,999

ASM Mechanical Systems
Pallavi and Anil Atluri
Scott Brakebill
Estate of Helen S. Brown
Leslie and Stuart Campbell
Estate of Nellie Crescio
Cross County Savings Bank
Joy Fishman
Andrew S. and Jill Frey
Janet Furey
H/2 Credit Manager
Patricia Haegele
Frederick D. Hild and Harriet A. Hild Living Trust
Estate of Anna Hirsch
Estate of Joan Hogan
Robert E. Holley Family Trust
Estate of Edward Lawless
Guy Lawrence and Kenneth Kraus
Mary M. Luria, Esq.
Pat McMullan
Nead Electric Co.
Penguin Air Conditioning Corp.
Pinnacle Environmental
Ann and Paul Rosche

\$10,000-24,999 (continued)

Sabey Data Centers
 William Siegel Trust
 Striano Electric
 Estate of Theoharis (Harry) Tesmetges
 Katrin Theodoli
 Estate of Mary P. Thomas
 Truist
 Mark Villamar and Esther Milsted
 Walmart Foundation
 The Waterview Foundation, Inc.
 Estate of Mildred Wottawa
 Thomas W. Young

\$5,000-9,999

Chelsea Backer
 Bernice Barbour Foundation
 Estate of Margaret Beiter
 BG Construction LLC
 Natasha Brenner
 Helen S. Brown Trust
 Janet G. Carlson
 Jim Cleary
 Davis & Gilbert LLP
 John and Gene Ferguson
 Pegeen Fitzgerald Foundation
 Galishoff Family
 Greater Milwaukee Foundation
 Arthur T. Anderson Family Fund
 Garth E. Griffiths and Julie Garfunkel
 John and Sarah Henry
 Carol Hermann, M.D.
 Cynthia Hochman
 JLS Cost Management Systems Inc.
 JTC Painting
 Estate of Bessie Kavakos
 Dr. Harvey and Nora Krieger Endowment Fund
 Lane Office
 Keith Manning, DVM
 Nielsen Charitable Foundation
 NYCGives/EarthShare
 Edmar Petterson
 Doug Ray and John Olsen
 Estate of Ronnie Lee Ryan
 Susan E. Sidd and Marc G. Odrich
 Robert Stanton and Susan Melden
 Credit Suisse Employee Giving Program
 Estate of Calvin Teckyon
 Gina Valliere
 The Leo S. Walsh Foundation
 Carol S. and Larry Weissenberg
 Barrie and Deedee Wigmore

\$2,500-4,999

Annie Angellino
 Erwin L. Atkins
 Frederick Bear

Paul Bernstein
 David Best, M.D.
 Broadway Barks
 Estate of Margaret June Brown
 Marc Buckley
 Andrew Castaldo
 Gloria Castillo
 JP Morgan Chase
 Abraham and Rebecca Crystal Foundation
 Rudolph Dinkel Trust
 Eagle Scaffolding Services, Inc.
 Barbara Lee Ebs
 Gloria Estefan Foundation
 Arthur J. Gallagher & Co.
 Michael Gray
 Josephine Lawrence Hopkins Foundation
 Horizon Media, Inc.
 Estate of Audrey Kasha
 Susan B. Kass
 Estate of Evelyn Katz
 Kinnoull Foundation
 John H. Leitner
 Estate of Dorothy Londo
 Kevin Magid
 Elisabeth St. B. and Timothy McCarthy
 Lyn McHugh
 Milrose Consultants, Inc.
 Elizabeth and Michael Moran
 Ted and Alyssa Moudis
 Don Mullen
 Nouveau Elevator
 Don Purdy
 Helen S. Rakowski Trust
 Iatha Ravi
 Rite-Way Internal Removal, Inc.
 Sandra Lee Rogers
 Helen D. Roosevelt
 John and Diane Sabey
 Sarah Saltzberg
 Charlie and Maura Schwartz
 Eugene and Susan Schwartzwald
 Devin and Mike Shanahan
 John Sheehan
 Patricia Stewart and Frank MacNamara
 Michael T. Strianese
 Patricia Wadley
 Nancy Wender and Steven Rand
 Therese K. White Charitable Trust
 Sally Wood
 Kimberly Yarnell

\$1,000-2,499

Mark and Leslie Aaron
 Abrams Charitable Fund
 Ingeborg Adams 2014 Irrevocable Trust
 Mary Amendola
 Eisner Amper LLP

Andrew Anderson
 Tim Armstrong
 Estate of Barbara Asch
 Jerry Baker
 Evan and Dina Bakst
 Ron Balasco
 Liza Ball
 Christina M. Baltz
 Estate of Franklyn Barrett
 Mary B. Barto
 Elisabetta Bartoloni
 Marcia Bateson
 Claude and Natalie Baumann
 The Benevity Community Impact Fund
 Jeffrey Berger
 Neuberger Berman
 Bluestem Prairie Foundation
 Laurie Bodor
 Elena Brody
 Jane Brody
 Sabrina Brucker
 Dawn Burness
 C. A. L. Foundation
 Anna Castro
 Central Synagogue
 Christina Chiu
 Citrin Cooperman and Company, LLP
 Estate of Andrew Clunn
 Grace Coddington
 Harvey Cohen
 Carmine Curcio
 Matthew DeLeon
 Donaldsons, Inc.
 Donnelley Charitable Trust
 The William H. Donner Foundation
 Panna Doshi
 Robert F. Draper
 Muriel Drewitz
 Patricia Etzold
 Facebook
 John J. and Joyce M. Farrell
 Rancho Feedwell Foundation
 Lee M. Feore
 Stephen H. Flamberg
 Ford Foundation
 Grace Forster
 Henry Fownes
 Lois Friedman
 From Our Family to Yours Foundation
 John A. Garraty, Jr.
 Marilyn Gilhuly
 Laurence T. Ginsberg
 Daniel Goldberg
 Don Goldberg
 Goldman, Sachs & Co. Matching Gifts
 Jen Gowers
 Grantham, Mayo, Van Otterloo & Co. LLC

Graphic Business Solutions, Inc.
 Thomas Griesa
 Herbert E. Groskin Foundation
 Camilla Grusd
 Matthew and Lori Hackethal
 Melinda Hackett
 Dede Harris Productions, LLC
 Edith Hartleb
 Mabel Hasbrouck Perpetual Living Trust
 Gates Hawn
 Gardiner Hempel
 Jill Herman
 Mandana Hormozi
 Harry Hudesman
 Joyce Hutchens
 Tania Isenstein
 Hans G. Jepson
 Karen Jewett
 Ken Johnsen
 The Loving Family and Friends of Ursula Johnson
 Jeffrey Katz
 Ann Kiesel
 Jeanie Kilgour
 Herman Kornfeld
 David Krone
 Latham & Watkins LLP
 Kathleen Law
 Tommaso Leo
 Jeannette Leonhardt
 Susan and David Levine
 Richard Lichter
 Rachel Liu
 Aubree Lennon
 London Jewelers
 John LoVerde
 Marquis George MacDonald Foundation, Inc.
 Plato Malozemoff Foundation
 Marks Paneth & Shron, LLP
 Dorothy Marks
 Robert Marziotto
 Carol McCullagh
 Elizabeth McCune
 Margaret McGetrick
 Amy McIntosh
 Rachael Millar
 Fred Modell
 Quenna Moore
 Melinda Mora
 Alexandra Muller
 Richard Muller
 Annemarie Muscatella
 Bruno Nacinovich
 Alyson Neafsey
 Network for Good
 Mary I. Nicoson
 Colleen Noall
 Tami Nystrom

David W. Ogrin
Oxford
Ben Parker
Martha-Louise Parmalee
The Petco Foundation
Nancy Phelan
Elizabeth Pierce
Christopher Pillai
Roberta Polce
Michael Polito
Faith Popcorn
Mark S. Ptashne
Barry Putterman
Lauren Pytel
Pzena Investment Management
Linda Quest
Marilyn M. Rhodes
Riverhead Kennel Club
Eileen Robert
Pattie Robertson
Rohauer Collection Foundation, Inc.
Beth Rosen
Stewart Rosen
Harvey Rosen
Mel Rosenfeld
Mary Ruffo
Alice Ryan
Frank Saggese
Estate of Elizabeth Sanders
Edward J. Santos
Martha L. Schiff
Susan Schnellwar
David M. Schoenberg
Helen Schwartz
Mildred Schweder
Estate of Kate Seton
Joseph Shanahan
Andrew Shanahan
Lisa Sidel
Peter Small
Joseph Smith
Sarah Solomon
The Spot Experience
Morgan Stanley
Howard Stern
Ralph M. Stone
Savills Studley, Inc.
Dolores Swirin-Yao
Margaretta Taylor
Mark Tessler
Malcolm Tulloch
Verizon PAC Match
Francesco Vigorito
Piper Wallace
Jared Warshaw
Weill Family Foundation
Ron Welsh

Walt Whitman PTA
Robert H. Wilder
Terry Williamson
John Xikis Foundation
Robert Zincone
Amazon Smile

CORPORATE PRO BONO SUPPORTERS

Carat
Hill's Pet Nutrition
WRNS



Bideawee strives to correctly recognize all donors. We apologize for any errors, omissions or misspellings in this report. To report an error, call our Development Department at 1.866.262.8133.

FINANCIALS FY 2017 & 2016

[Statement of activities]

	2017	2016
REVENUES, GAINS AND OTHER SUPPORT		
Special events revenue	\$ 655,511	\$ 513,089
Less: cost of direct benefit to donors	(122,492)	(101,407)
Special events net	533,019	411,682
Bequests and Legacies	4,567,620	4,592,847
Contributions	2,364,793	1,741,434
In-kind contributions	67,327	16,567
Adoption Centers, Animal Hospitals, Loving Legacy and other fees	2,165,716	2,405,983
Cemetery maintenance fees	363,513	400,554
Miscellaneous income	52,469	91,919
Investment income, net of investment fees	1,203,427	1,103,570
Change in value of beneficial interest in split interest agreements	98,399	(13,203)
TOTAL REVENUES, GAINS AND OTHER SUPPORT	11,416,283	10,751,353
EXPENSES		
PROGRAM SERVICES		
Adoption Center	3,780,836	3,506,871
Animal Hospital	2,202,877	2,293,449
Behavior, learning and volunteers	494,339	498,756
Memorial Parks	1,017,563	1,050,460
Loving Legacy	89,283	75,202
TOTAL PROGRAM SERVICES	7,584,898	7,424,738
SUPPORT SERVICES		
Management and General	1,295,186	1,263,549
Fundraising	1,739,282	1,392,447
TOTAL SUPPORT SERVICES	3,034,468	2,655,996
TOTAL EXPENSES	10,619,366	10,080,734
Change in net assets	796,917	670,619
Net assets, beginning of the year	25,503,482	24,832,863
NET ASSETS, END OF THE YEAR	\$ 26,300,399	\$ 25,503,482

[Statement of financial position]

	2017	2016
ASSETS		
Cash and cash equivalents	\$ 1,498,735	\$ 1,670,352
Bequests, legacies, and other receivables, net	1,070,720	141,399
Inventory	190,754	202,765
Investments	16,554,243	15,915,052
Prepaid expenses and other assets	184,153	129,477
Property and equipment, net	6,639,510	7,197,519
Beneficial interest in trust	931,812	833,413
TOTAL ASSETS	\$ 27,069,909	\$ 26,089,977
LIABILITIES		
Accounts payable, accrued expenses and other liabilities held	\$ 748,338	\$ 566,551
Deferred revenue	11,610	-
Capital lease obligations payable	9,562	19,944
TOTAL LIABILITIES	769,510	586,495
COMMITMENTS AND CONTINGENCIES		
NET ASSETS		
Unrestricted		
Available for operations	7,760,946	7,398,875
Net investment in property and equipment	6,629,948	7,177,575
Total Unrestricted	14,390,894	14,576,450
Temporarily restricted	916,368	167,891
Permanently restricted	10,993,137	10,759,141
TOTAL NET ASSETS	26,300,399	25,503,482
TOTAL LIABILITIES AND NET ASSETS	\$ 27,069,909	\$ 26,089,977



...and they all lived happily ever after.




bideawee®
animal people for people who love animals®
Manhattan • Wantagh • Westhampton
bideawee.org • 866.262.8133